

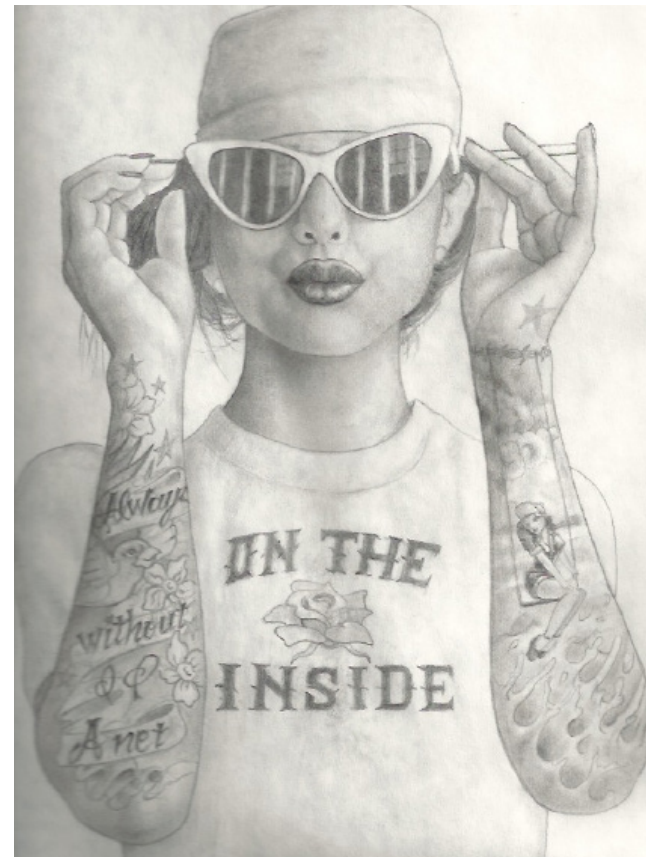
## ON THE INSIDE

JUNE 2 – SEPTEMBER 8, 2019

LOS ANGELES - Craft Contemporary presents *On the Inside*, a group of approximately 110 portrait drawings by LGBTQ+ artists who are currently incarcerated. In a nation that incarcerates more people than any other country in the world, LGBTQ+ prisoners face a greater risk of physical and sexual victimization. They are more likely to experience assault and abuse by corrections officers as well as other prisoners, and less likely to have support from family and friends on the outside, due to their sexuality or gender identity. Behind bars, their identities are stripped away, and they become just another number in the system.

*On The Inside* is a group show of LGBTQ+ artists who are currently incarcerated. The art is made from basic materials the prisoners have access to behind bars: mostly letter-sized paper, dull pencils, ball-point pen ink tubes (the hard shell is deemed too dangerous), and unlikely innovations such as using an asthma inhaler with Kool-Aid to create an air brushed painting.

The exhibit is the culmination of a multi-year project conceived of by Tatiana von Furstenberg in collaboration with Black and Pink. The project started with a small ad in the Black and Pink newsletter, a monthly publication filled with prisoner-generated content, sharing stories about prison life. Ignited and inspired by this call for art, more than four thousand pieces were submitted. Our forgotten brothers and sisters seized the opportunity to be heard, giving birth to this collective exhibition.



# Craft Contemporary

Forced to cope with a non-inclusive society, many marginalized Americans end up incarcerated due to a lack of resources and privilege. All too often these essential voices are silenced, in this case, because they are locked behind concrete and steel.

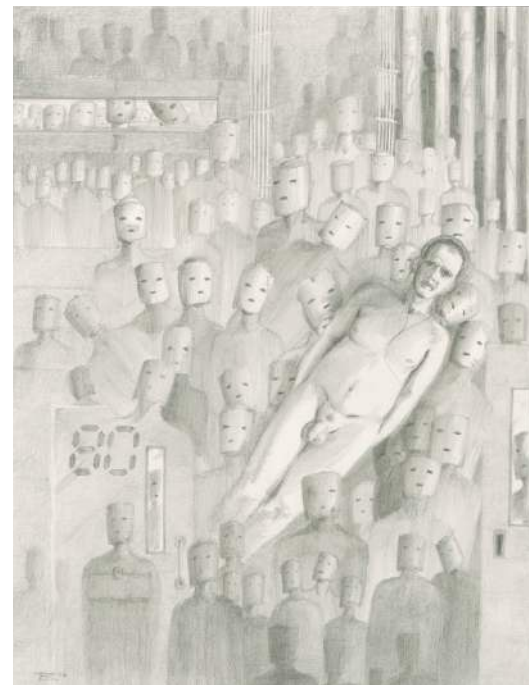
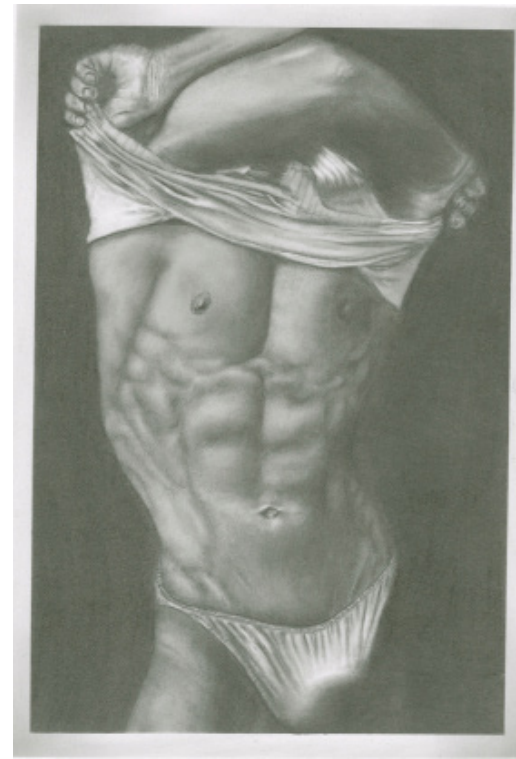
Through the lens of art, we on the outside have the opportunity to bear witness to the suffering, and also celebrate the resilience of the artists who are locked up. The art on these walls demonstrates the ability of those who are suffering to still create beauty. Each of the pieces tells a story and these are stories we must listen to.

None of the artists will be in attendance as they are still behind bars, however, their works create cracks in the walls, allowing this much needed point of view to escape for the world to see. *On the Inside* has created a way for the public to interact with the incarcerated artists. Patrons are able to text the artists through a transcribing service.

A series of public programming and outreach events will accompany the exhibition. Up-to-date information about the events will be made available at [www.cafam.org](http://www.cafam.org).

## OPENING RECEPTION

An opening reception for *On the Inside* will take place on Saturday, June 1 from 6:00 – 9:00 p.m. The opening is free for museum members and open to the public for a \$12 entry fee.



IMAGES (TOP TO BOTTOM): Jim S., *Cynosure*. Courtesy of the artist; Tony B., *A Self Portrait*. Courtesy of the artist.

---

Located on Los Angeles' historic Miracle Mile since 1965, Craft Contemporary reveals the potential of craft to educate, captivate, provoke, and empower. With a focus on contemporary art made from craft media and processes, Craft Contemporary presents dynamic exhibitions by established and emerging artists and designers who are often underrepresented in larger art institutions. Through a robust roster of regular programs and events, Craft Contemporary offers creative opportunities for the public to participate in hands-on workshops led by professional artists. Craft Contemporary cultivates an environment for people in Los Angeles to deepen their relationship to art, creativity, and one another.

LOCATION: 5814 Wilshire Blvd., Los Angeles, CA 90036

ADMISSION: Free every Sunday

REGULARLY: \$9 for adults; \$7 for students, teachers, seniors; free for Craft Contemporary members

HOURS: Tuesday - Friday, 11:00 a.m. to 5:00 p.m.; Saturday & Sunday, 11:00 a.m. to 6:00 p.m.; closed Mondays. Every first Thursday of the month, extended hours 6:30 - 9:30 p.m.

# Craft Contemporary

## PROGRAMS

Craft Contemporary will offer workshops and events in conjunction with the exhibition, including CraftNight on the first Thursday of the month from 7:00 – 9:00 p.m. and CraftLab family workshops on the second Sunday of each month from 1:30 – 3:30 p.m.

### CRAFTNIGHT: SIGN PAINTING WORKSHOP WITH ART DIVISION

Thursday, June 6 | 7 – 9 pm

\$12 | Free for members

(includes materials, drinks, and snacks)

Inspired by *On the Inside*, Los Angeles-based non-profit Art Division leads a unique sign painting workshop in preparation for the LA Pride Parade. Participants will learn basic hand-lettering techniques and will be encouraged to use paint and text to express their messages of love, empowerment, or political unrest.

### ALTERNATIVE FORMS OF PROTEST

Saturday, June 22 | 1 pm | Free with RSVP

When we think of protest many envision signs, chants, and marching. But protest can also be a statement or action expressing disapproval of or objection to something. Hear about craftivism from renowned British author and craftivist Sarah Corbett and other guests in conversation with Tatiana von Furstenberg. Creativity can be a powerful voice of protest.

### CRAFTIVISM WORKSHOP WITH SARAH CORBETT

Wednesday, June 26 | 6 pm | \$40 | \$35 members  
Adults 17 years and older | Pre-registration required

Join Sarah Corbett, award-winning activist, author and founder of the global Craftivist Collective for an evening to learn about a unique type of activism she calls 'gentle protest' using craftivism (craft + activism). Learn how Corbett's work has helped to change laws, policies, hearts and minds and take part in two of her unique projects to become a kind, effective and gentle craftivist using hand embroidery and paper craft. Craft skills are not essential. Come with an open heart and an open mind.

### STORIES OF RE-ENTRY

Sunday, July 28 | 1 pm | Free with RSVP

Many think the largest barriers for incarcerated people are the fences of the institution, but this is not true. Release from incarceration is not a guarantee of success. The strategy of supporting someone in maintaining their freedom is not a prescribed process either. Hear from previously incarcerated people who will share their stories about the tools, programs, and measures that have helped them have a successful re-entry.

### RESILIENCE

Sunday, September 1 | 1 pm | Free with RSVP

Dominique Morgan, National Director of Black & Pink, will tell his story about the direct and secondary impact of incarceration on his family and community and discuss how to create a society where resilience is not necessary for survival.

### PRINTMAKING: A CRAFTLAB FAMILY WORKSHOP

Sunday, August 11 | 1:30 – 3:30 pm  
\$10 adults | \$7 children | Free for members

Learn different types of printmaking and make envelopes to send to our currently incarcerated LGBTQ+ PenPal network.