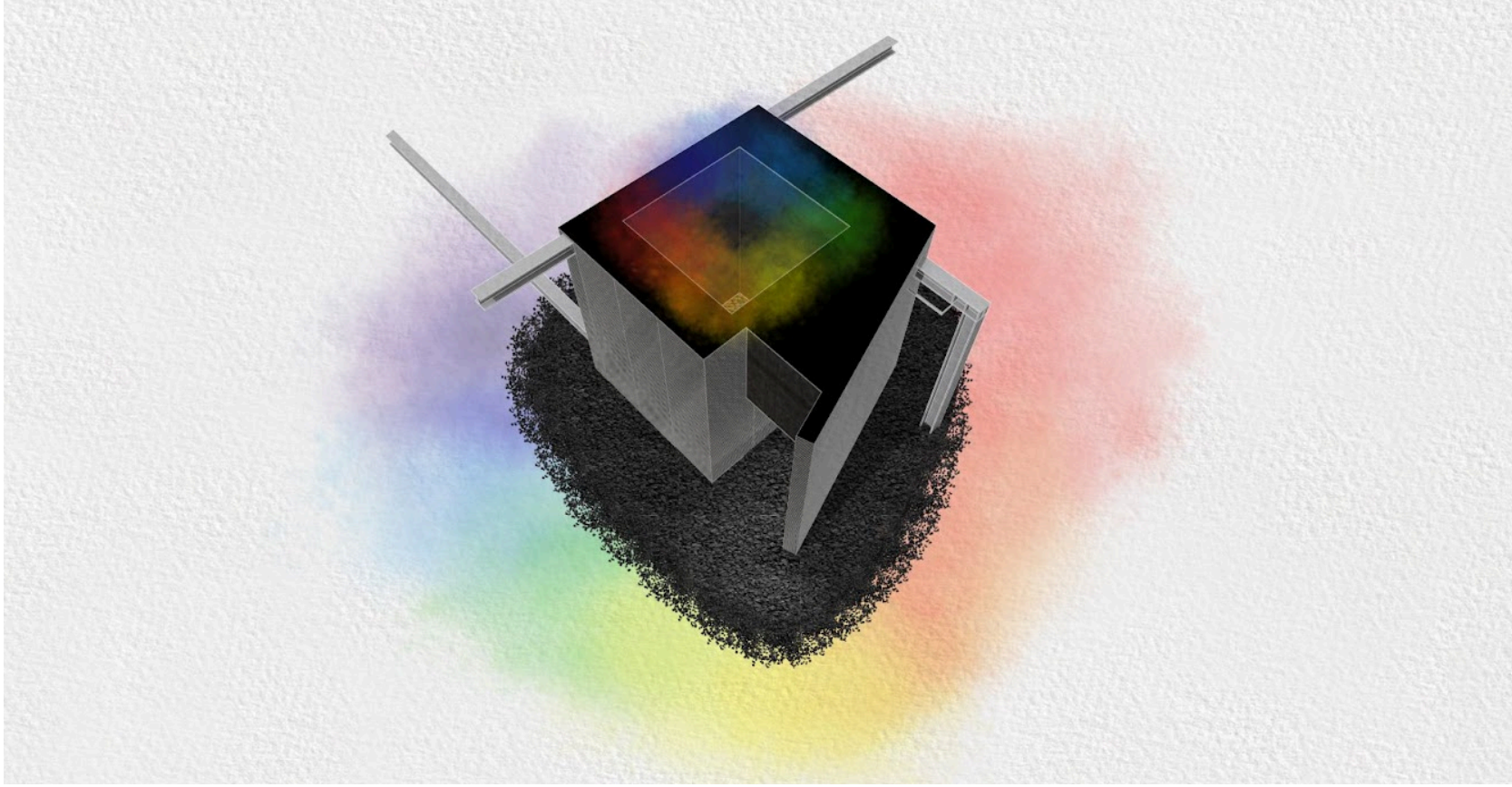




FOR IMMEDIATE RELEASE  
May 28, 2023

**Media Contact**  
Kate Yeh Chiu, Executive Director  
Materials & Applications  
[kate@materialsandapplications.org](mailto:kate@materialsandapplications.org)

**Materials & Applications presents**  
***Black — Still* by enFOLD Collective**



LOS ANGELES—Materials & Applications (M&A) presents *Black — Still*, a multi-sensory installation by enFOLD Collective that marks M&A's second project in the M&S x Craft Contemporary courtyard.

*Black — Still* is on view at 5814 Wilshire Boulevard from May 28 through September 10. A complementary series of programs centered around well-being will take place in and around this program. Admission to the M&A x Craft Contemporary courtyard to view the M&A project is free.

#### About *Black — Still*

*Black — Still*'s design and its complementing programs explore narratives of wellness, access, and cultural expression with specific attention to marginalized communities. Rendered in simple, familiar materials, the reverential volume is responsive to various obstacles on, above, and beneath the courtyard's ground, while its dark finish celebrates Black in a response to traditional and modernist notions in architecture predicated on whiteness. The volume shapes a space of joyous contemplation, sound-dampened from the adjacent noises of Wilshire Boulevard, offering shade, shelter, and a cooling mist during the summer months.

In addition to its cultivation of calm, *Black — Still* engages the underlying geological conditions of the M&A X Craft Contemporary Courtyard, where tar oozes and methane gas rises from the ground, elements originating from the adjacent La Brea Tar Pits and underground oil seeps. Throughout LA, this primordial matter pushes through human-made infrastructure. The project's wall assemblies of inside-out lath and plaster reproduce a familiar form of material seepage and call attention to the formlessness and expansive potential of what lies below the surface. *Black — Still* will be complemented by a series of public wellness events and workshops that center exchanges between creative practice and self- and community care practices.

#### *Black — Still* Summer Programs

Sunday, May 28 | 12 – 2:30 pm | outdoors | free

*Black — Still* Kick-Off  
Installation Walkthrough with enFOLD Collective  
Sound Bath with Dr. Kisha Campbell

Join designers Megan Echols and Dana McKinney White of enFOLD Collective for an introduction to their summer installation in the M&A x Craft Contemporary Courtyard. The presentation will be followed by a sound bath offered by artist Kisha Campbell.

Sunday, June 25 | 12:00 – 3:30 pm | outdoors | free

*Black — Still*: Movement  
Yoga with Sonya Om  
Somatics with Ajani Brannum

Join us for a day of movement in and around the courtyard installation *Black — Still*. The afternoon will begin with a yoga session for all ages led by Sonya Om and conclude with a dance and movement workshop developed in response to the installation led by Ajani Brannum.

Sunday, July 16 | 12:00 – 3:30 pm | outdoors | free

*Black — Still*: Narratives  
Living Library with A New Way of Life  
Affirmations with BEAM

Come join us for a day of storytelling and affirmations. The afternoon begins with a program led by A New Way of Life that opens windows into the lived experiences of formerly incarcerated people, helping to heal trauma and promote awareness. This storytelling session is followed by a workshop on affirmations and other self-care practices led by the Black Emotional and Mental Health Collective (BEAM).

Sunday, August 6 | 12:00 – 3:30 pm | outdoors | free

*Black — Still*: Reflections  
*Tea Afar* with April Banks  
Workshop with M&A TBD

Join us for tea with artist April Banks, who will lead us through a sweet tea ceremony in the southern Black tradition. This is followed by a workshop and conversation around ongoing projects led by M&A.

Sunday, August 27 | 12:00 – 3:30 pm | outdoors | free

*Black — Still*: Restoration  
Restorative Justice with the Center for Restorative Justice Work  
Meditation with Jylani Ma'at

Join us for an afternoon at *Black — Still* featuring a workshop on restorative justice and family wellness led by the Center for Restorative Justice Work (open to all ages), followed by a meditation offered by Jylani Ma'at.

Saturday, September 9 | 12:00 – 5:00 pm | outdoors | free

*Black — Still*: Celebration

Join us for a celebratory penultimate afternoon at *Black — Still* among stalls and stands featuring Black-owned art, craft, and cultural businesses, followed by a Closing Reception for the installation.

#### Credits

*Black — Still* is supported in part by the Graham Foundation for Advanced Studies in the Fine Arts, the Black Reconstruction Collective, Pasadena Art Alliance, and City of Los Angeles Department of Cultural Affairs.

Additional support for the project has come from Chu + Gooding, Deegan Day Design, Lorcan O'Herlihy Architects, Ivy and Fred McKinney, Warren Techentin Architecture, David and Kathy White, Co Architects, Jenna Didier, Hawkins\Brown, Marlon Johnson, Marc G. Andre Architects, John Stewart, Stefan Stewart, and This x That. A full list of contributors can be found at [www.materialsandapplications.org](http://www.materialsandapplications.org).

In-kind supporters: Hempitecture, Simpson Strong-Tie, Liberty Tire Recycling.

Special thanks to Lisa Balse, Aubrey Bauer, Jylani Ma'at Brown, Allie Brown, Jared Culp, Gary Fox, Eryn Li, Raffy Mardirossian, Jila Mendoza, Dami Olufowoshe, Francois Sabourin, Jamel Williams, and Shuo Zhai. Immense gratitude to builders P31 Construction / Builder Bee.

#### About enFOLD Collective

enFOLD Collective is an interdisciplinary design practice led by Megan Echols and Dana McKinney White that seeks to position community voices at the center of their work. Through stakeholder engagement and collaborative design processes, their mission is to propel a renewed sense of thinking and uplift the voices of underrepresented and under-resourced communities. Innovation, aesthetics, and craft equally serve their design framework and praxis.

[www.enfoldcollective.com](http://www.enfoldcollective.com)  
Instagram @enfoldcollective

#### Megan Echols

Megan is an urban planner, designer, and artist with a background in architectural design. As an urban practitioner, she has worked in Florida's public sector for over 6 years. While receiving her Masters of Urban Planning from the Harvard University Graduate School of Design, Megan was integral to the creation and development of the inaugural Black in Design Conference at the Harvard GSD. Megan also has a Bachelor's of Architecture from Howard University in 2013.

#### Dana McKinney White

Dana is a passionate licensed architect and urban planner. In LA, she worked at Gehry Partners on the LA River Master Plan, designing solutions for water management, open space, affordable housing, and homelessness, as well as on the development of the Southeast Los Angeles Cultural Center and Headworks Park.

Dana is also an Assistant Professor of Urban Design at the Harvard Graduate School of Design in the Department of Urban Planning and Design and runs a justice and equity consulting practice. She has served on the M&A Program Board for 4 years. While receiving her Masters degrees in Architecture and Urban Planning from Harvard University, she co-founded the inaugural Black in Design Conference. She has a Bachelor's in Architecture from Princeton University.

#### About Materials & Applications

Materials & Applications (M&A) is a Los Angeles-based non-profit cultural organization dedicated to building a public culture of experimental architecture. With a focus on architectural ideas and processes, M&A curates critical exhibitions and commissions new work by under-recognized architects, designers, and artists. Our exhibitions give space to exceptional experiments across multiple disciplines while challenging the relationship between art, architecture, and public encounters. Through an annual calendar of programs, including hands-on workshops, performances, and conversations, we explore how art and architecture can transform underutilized spaces into unexpected encounters. Since 2002, M&A has produced more than 25 temporary site-specific installations and over 100 programs presenting new ideas in art, architecture, and design. Our exhibitions and programs are always free and open to the public.

[www.materialsandapplications.org](http://www.materialsandapplications.org)  
Instagram @materialsandapplications  
Facebook @materialsandapplications

#### About Craft Contemporary

Located on Los Angeles' historic Miracle Mile since 1965, Craft Contemporary reveals the potential of craft to educate, captivate, provoke, and empower. With a focus on contemporary art made from craft media and processes, Craft Contemporary presents dynamic exhibitions by established and emerging artists and designers who are often underrepresented in larger art institutions. Through a robust roster of regular programs and events, Craft Contemporary offers creative opportunities for the public to participate in hands-on workshops led by professional artists. Craft Contemporary cultivates an environment for people in Los Angeles to deepen their relationship to art, creativity, and one another.

Location: 5814 Wilshire Blvd., Los Angeles, CA 90036  
Hours: Tuesday - Sunday, 11:00am to 5:00pm  
First Thursdays: 11:00am - 8:00pm  
Free every Sunday  
General admission: \$9 for adults; \$7 for students, teachers, seniors; \$5 for TeenTix holders; free for Craft Contemporary members and children under 10

[www.craftcontemporary.org](http://www.craftcontemporary.org)  
Instagram @craftcontemporary

#####