



Craft Contemporary

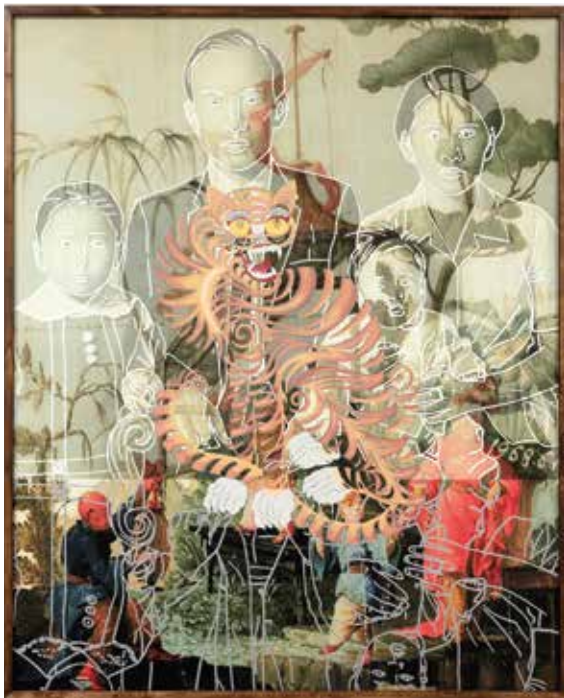
5814 Wilshire Boulevard

CONTACT
Sherry Chen
sherry@craftcontemporary.org

FOR IMMEDIATE RELEASE
MAY 3, 2024

Kyungmi Shin: Origin Stories

May 26, 2024 – September 8, 2024



The Head in the Tiger's Mouth, 2021, Acrylic on archival pigment print, UV laminate, 54 7/8 x 44 5/8 in. Courtesy of Stan Cohen.

LOS ANGELES- Craft Contemporary is pleased to announce *Kyungmi Shin: Origin Stories*, an exhibition documenting artist Kyungmi Shin's personal narrative as a Korean woman and as an indigenous ethnographer exploring significant stories relating to the movement of people and ideas across continents, oceans, and the imagination. Shin employs personal photographic archives, painterly traditions, ceramics, ethno-mythological symbolism, and found chinoiserie objects to demonstrate convergences of knowledge and creativity. Organized by guest-curator jill moniz, the exhibition will be on view from May 26 – September 8, 2024.

"Kyungmi Shin's unique engagement with the complexities of history, Asian identity and temporality creates a portal for the viewer. Her work transports us to the past and back to examine shamanism, religion, chinoiserie, 'the Orient' as well as the migrational and navigational forces that shape empire, colonization, religion, gender, refusal, and importantly love," said moniz.

"Craft Contemporary is thrilled to present *Kyungmi Shin: Origin Stories*, a captivating exploration of history, identity, and belonging. Shin's meticulous attention to detail and her profound understanding of cultural exchange create a space where past and present converge, inviting us to reflect on our interconnectedness and the stories that define us," said Rody N. Lopez, Craft Contemporary's Executive Director.

Thinking across space and time, Shin's silhouettes and layers of imagery demarcate time and its middle ground where she brings attention to opacity as a construct. Her paintings expand our awareness of liminality through layered knowledges, geographies and epochs where we can connect our own sense of location and being. The layers also illuminate the relationship between the body and natural and built landscapes as an architecture of meaning.



Image Top to Bottom:

Three Magi, 2022, Acrylic on archival pigment print, UV laminate, 44 5/8 x 49 3/8 in. Courtesy of Kim Allen-Niesen.

Mirrors of Hard Distorting Glass, 2022, Acrylic on archival pigment print, UV laminate, 61 x 90 7/8 in. Courtesy of LACMA.

Site specific installations add dimensionality to *Origin Stories* to reveal Shin’s training as a sculptor. Shin advanced her study of ceramics at Jingdezhen, the historic “Porcelain Capital” in the People’s Republic of China. These studied and reimagined sculptural forms are in a call and response with chinoiserie objects Shin has collected from all over the world to articulate the global proliferation of aesthetics as both commerce and communication.

Kyungmi Shin creates a visual language that acts as a palimpsest revealing and concealing our global histories, identities, and geographies as a collection of meaningful narratives that define place and shape shared experiences.

About Kyungmi Shin

Kyungmi Shin is a visual artist working with painting, sculpture, and photography. She received MFA from UC Berkeley in 1995. Her works have been exhibited at Berkeley Art Museum, Sonje Art Museum (Korea), Japanese American National Art Museum (Los Angeles, CA), and Torrance Art Museum (Torrance, CA), and have received numerous grants including California Community Foundation Grant, Durfee Grant, Pasadena City Individual Artist Fellowship and LA Cultural Affairs Artist in Residence Grants. She has completed over 20 public artworks, and her most recent public video sculpture was installed at the Netflix headquarters in Hollywood, CA in 2018.

OPENING RECEPTION

Be first to experience *Kyungmi Shin: Origin Stories*. Evening celebrations include an open bar, set by DJ Eléanora, and exclusive preview of Kyugmi Shin’s exhibitions. Event is on Saturday, May 25, 2024 from 6 – 9 p.m.

PROGRAMS

**Gallery Conversations: Kyungmi Shin & jill moniz
Sunday, June 23 | 11:30 a.m. | free**

Join us for a gallery conversation with curator jill moniz and exhibiting artist Kyungmi Shin. Learn about the different works that are part of *Origin Stories* and Shin’s visual storytelling strategies that combine and layer painterly traditions, ethno-mythological symbolism, and porcelain into a variety of installations, sculpture, and paintings.

**Curator Walkthrough: Kyungmi Shin: Origin Stories
Sunday, July 21 | 11:30 a.m. | free**

Curator jill moniz leads an insightful and personal walkthrough of *Kyungmi Shin: Origin Stories*. Learn about the various themes explored in Kyungmi Shin’s multidisciplinary practice, which combines and layers personal and familial stories and various visual and material languages to interrogate global colonialism.



Craft Contemporary

5814 Wilshire Boulevard

Craft Contemporary is an art museum whose purpose is to reveal the potential of craft to educate, captivate, provoke, and empower. Craft Contemporary achieves its mission by exhibiting the artists of our time who favor craft materials and processes. Giving voice to local artists, emerging artists and often under-recognized mid-career artists is a museum priority that works to ensure the recognition of various voices not always heard in larger institutions. The museum strives to achieve equitable access through free and low-cost programs, and the inclusion of multiple teaching artists from communities throughout Los Angeles who offer unique art-making workshops, K-12 school programs, senior adult workshops, and art talks. For more information, visit www.craftcontemporary.org.

LOCATION: 5814 Wilshire Blvd., Los Angeles, CA 90036

ADMISSION: \$9 for adults; \$7 for students, teachers, seniors; free for Craft Contemporary members;
FREE admission every Sunday

HOURS: Tuesday - Sunday, 11:00 a.m. to 5:00 p.m.

###