

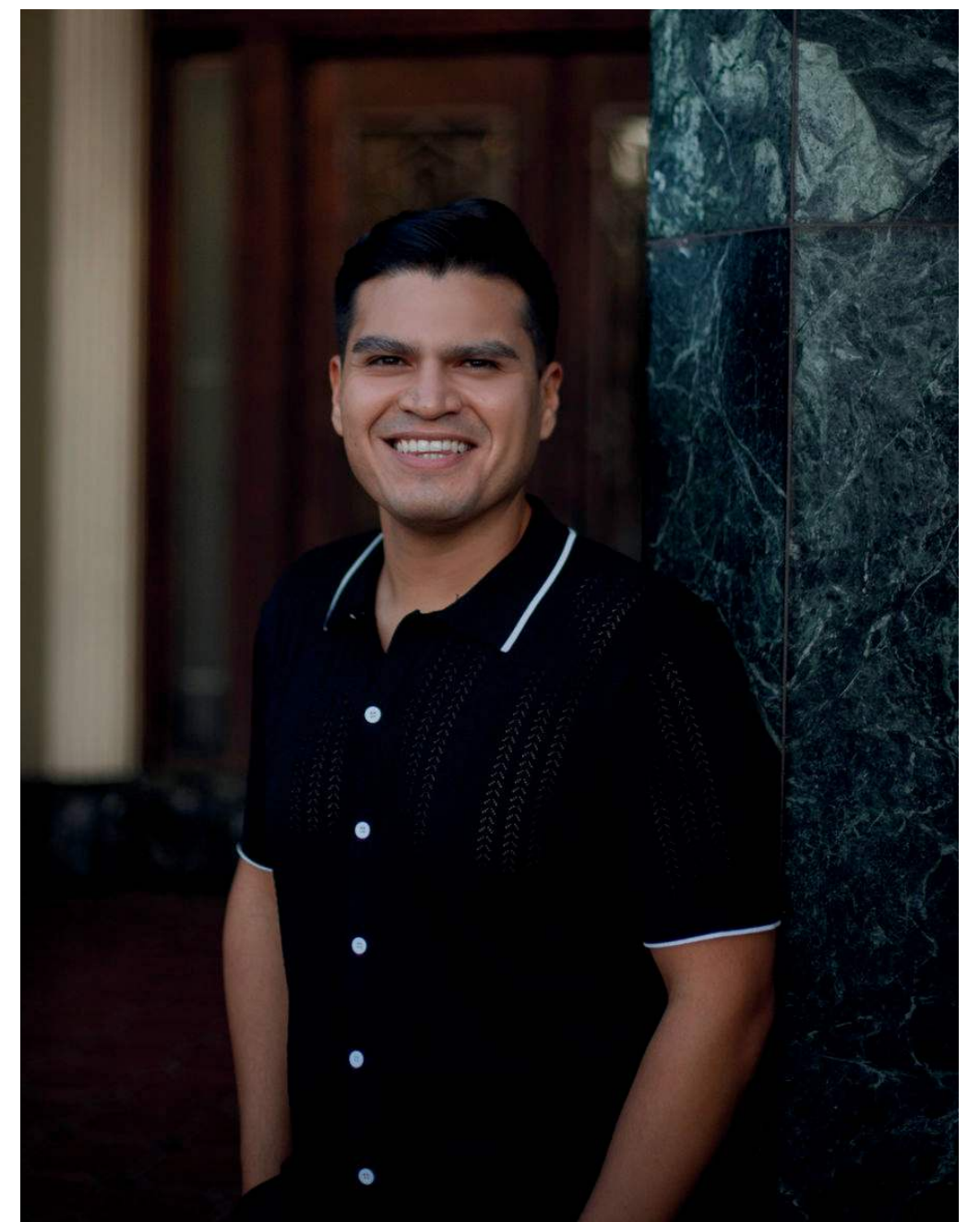
Craft Contemporary

About

Founded as a museum in 1973, Craft Contemporary reveals the potential of craft to educate, captivate, provoke, and empower. As a non-collecting art museum with a focus on contemporary art made from craft media and processes, Craft Contemporary presents dynamic exhibitions by established and emerging artists and designers who are often underrepresented in larger art institutions. Craft Contemporary complements these exhibitions with a creative line-up of educational programs, including hands-on workshops led by professional artists. Craft Contemporary cultivates an environment for people in Los Angeles to deepen their relationship to art, creativity, and one another.

Originally established by painter Edith Robinson Wyle (1918 -1999) as a restaurant and gallery space called The Egg and the Eye, Craft Contemporary has grown into a vital cultural institution, renowned for pushing the boundaries of craft. Located on LA's Miracle Mile known for its rich history in arts and culture, the museum welcomes 30,000 visitors each year.

Through a rich array of exhibitions, multi-generational educational programs, and community engagement, Craft Contemporary continues to evolve, reflecting the ever-changing landscapes of craft and contemporary art. Our ongoing commitment to this dialogue ensures that we remain at the forefront of the craft movement, engaging and inspiring a new generation of artists and enthusiasts.



"Over the past six decades, Craft Contemporary has offered a sanctuary for those seeking to explore their creativity. It has provided countless individuals with the tools and space to express themselves, find solace, heal, and connect with others through the shared experience of making."

*~Rody N. Lopez
Executive Director
Craft Contemporary*



Board of Trustees Overview

The Board of Trustees at Craft Contemporary plays a crucial role in guiding the organization towards a sustainable future while ensuring that the museum fulfills its mission and adheres to its values. Board members are key advocates and ambassadors of the museum, helping to foster community engagement and secure the resources necessary for Craft Contemporary to thrive.

Board Composition and Committees:

The Board of Trustees consists of 12 to 22 individuals. Trustees serve a three-year term, with an option to serve additional three-year terms. There are four officers: Chair/President, Vice/Co-Chair, Treasurer, and Secretary. We seek diverse professionals who bring expertise in areas such as arts administration, finance, law, community engagement, and philanthropy. We value diversity in professional background, experience, and perspective, recognizing that a varied board strengthens our ability to serve our community effectively.

Key Committees: Executive, Governance, Fundraising, Finance, Audit, Program, and Facilities.

Key Responsibilities:

- Participate in strategic planning and oversight of the museum's operations.
- Support and evaluate the Executive Director.
- Ensure financial sustainability through fundraising and resource management.
- Monitor and enhance the effectiveness of programs and services.
- Uphold the organization's legal and ethical standards.

Board Member Expectations:

- Attend a minimum of four (4) board meetings per year and participate actively in committee meetings 1-2 times a quarter. The Board meets quarterly in September, November, February, April (Retreat), and June.
- Engage in fundraising and advocacy efforts.
- Contribute to the board's diversity of thought and experience.
- Fulfill a personal financial commitment in line with our 'Give or Get' policy of \$7,500 minimum contribution.

Annual Budget:

The museum operates with an annual budget of \$1.3 million.

Application Process

Prospective board members are encouraged to submit their applications through our online portal. Applications should include a resume, a brief statement of interest, and two professional references.

For further inquiries, please contact Rody N. Lopez, Executive Director at rody@craftcontemporary.org.

Board Member Benefits

- Complimentary Directors' Circle Membership at Craft Contemporary.
- Invitations to exclusive events and previews.
- Recognition on museum materials and the donor board.

By serving on the Board of Craft Contemporary, you join a passionate team dedicated to advancing the art of craft and its impact on society. Together, we can ensure that Craft Contemporary continues to be a space of innovation, education, and inspiration.

Officers

Corinna Cotsen, Board Co-Chair
Wally Marks III, Board Co-Chair

Elected Trustees

Alan Zafran
Cathy Seidman
George Minardos
Joe Coriaty
Leanne Lee
Michael D. Johnson
Nancy Adams
Peter Wendel
Robby Gordon
Shawn Bankston

